



**EUROPEAN**



**FARMHOUSE**



**TRADITIONAL**

## **RIVERSIDE**

**3 to 5 Bedrooms**  
**2.5 to 4.5 Bathrooms**

**Total Living Area : 2,944 Square Feet**

**First Floor : 2,112 Square Feet**

**Second Floor : 832 Square Feet**

**(865) 966-8700**

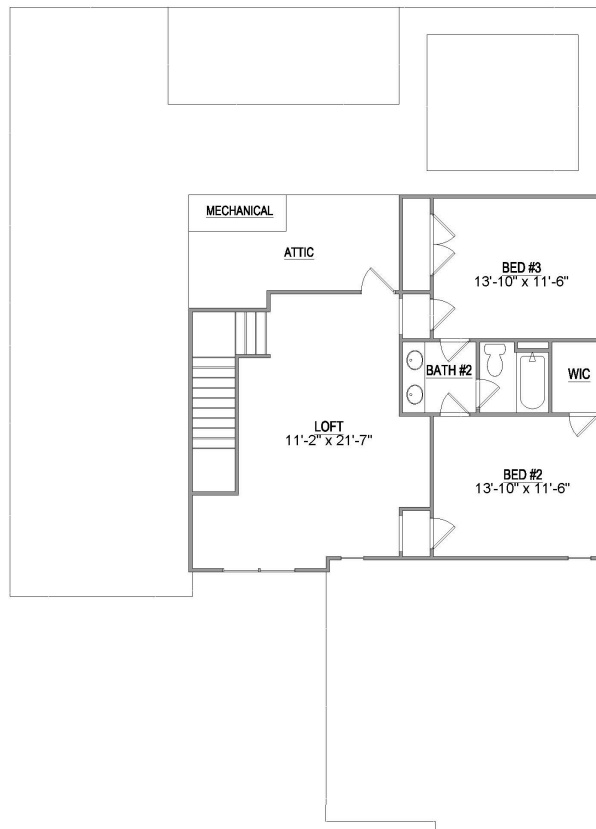
**[Info@SaddlebrookProperties.com](mailto:Info@SaddlebrookProperties.com)**

**[www.SaddlebrookProperties.com](http://www.SaddlebrookProperties.com)**

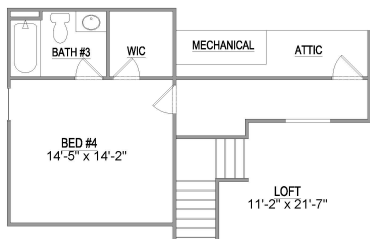
## 1st Floor



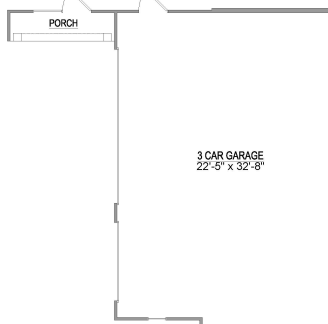
## 2nd Floor



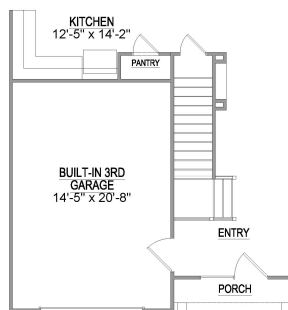
## Floor Plan Options



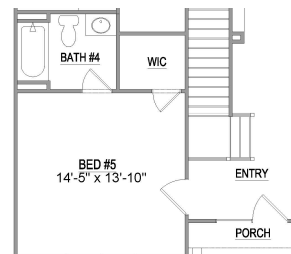
**OPTIONAL BED 4 & BATH 3**



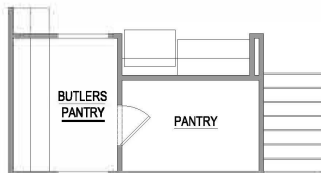
**OPTIONAL 3RD BAY**



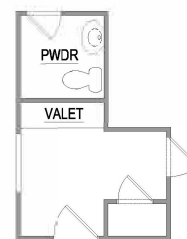
**OPTIONAL BUILT-IN 3RD BAY**



**OPTIONAL BED 5 & BATH 4**



**OPTIONAL BUTLERS PANTRY**



**OPTIONAL VALET**